

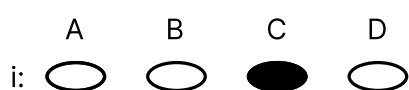
# How to complete FSCE multiple choice questions

Some of the questions will be multiple choice. You will need to select your answer by shading **one** correct answer for each question.

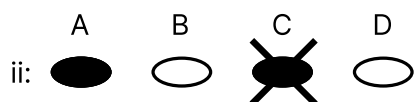
There will only be **one** correct answer for each question

Find the best answer answer for each question.

You must shade your answers like this:

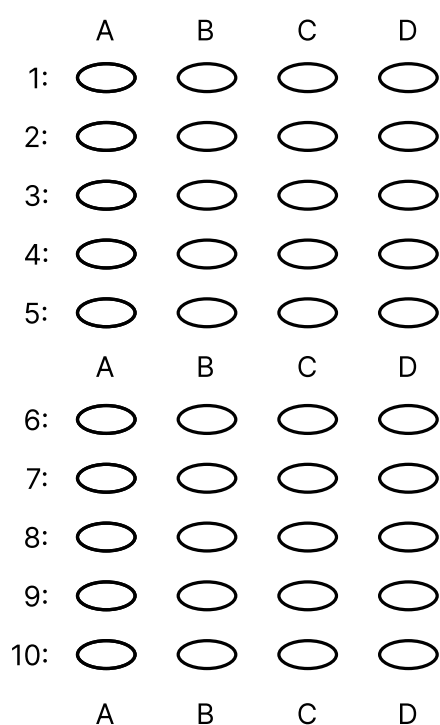


If you need to change your answer, put a cross through the incorrect answer and shade the correct one like this:



Please do **NOT** use a horizontal line or vertical line. The oval needs to be shaded.

The answer options will look like this:



You can see that A B C D is printed above and below the answer options.

Be careful to shade the right oval (A, B, C or D).

If you miss out any answers, remember to leave a gap.

**Always** make sure that the question number on the answer sheet matches the number in your booklet.