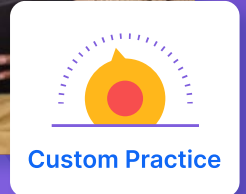
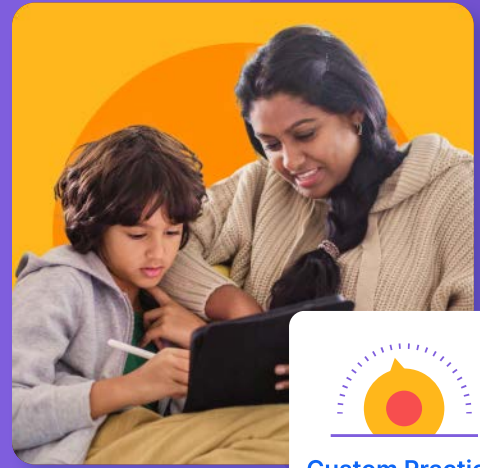




How to set a Custom Practice

Custom Practices allow you to pinpoint a specific area of the curriculum for your child to work on.

Learn how to get the most out of this feature below.



1. Tailor their practice

The more tailored you can make your child's Custom Practice, the more it will benefit them.

Instead of choosing a broad topic, click the arrow to expand the subtopics and again to see each sub-subtopic (see below). **Choose 1-2 at most.**

3. Select topics

Year Group
Year 5

- > Spelling
- > Vocabulary
- > Grammar
- > Punctuation
- > Comprehension

→

- > Spelling
- ▼ Vocabulary
 - ▼ Meaning of Words
 - Definitions
 - Antonyms and Synonyms
 - Homonyms, Homographs and Homophones
- > Grammar
- > Punctuation
- > Comprehension

Working on one area at a time:

- Allows your child to focus on one method – particularly helpful if they are finding the area difficult.
- Makes it easier for you to see your child's progress in each area of the curriculum.

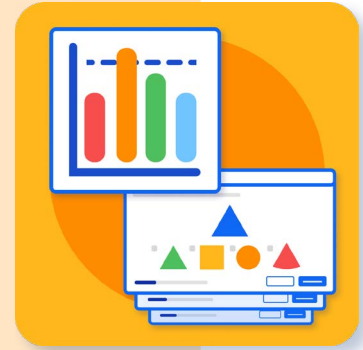
2. Choose the mode

Test Mode

Test Mode replicates **exam conditions**. This means no helpsheets, videos or explanations throughout and questions are marked at the end rather than after each one.

Test Mode is helpful for working on exam technique. For example, speed. Choose Test Mode, set a time limit, and work on answering more questions within a set time.

Don't use Test Mode if your child is working on an area they find challenging. Having access to the learning resources will help them to build confidence.



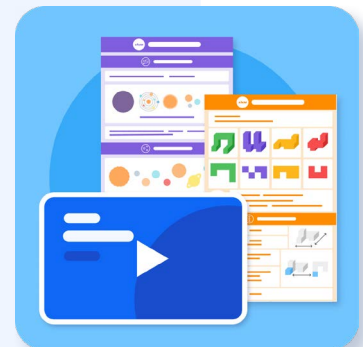
Tutor Mode

Help your child **without altering** their progress data. The results of a practice set in Tutor Mode will not be added to your child's mastery scores.



No Mode

Most of the time **we recommend using neither** Tutor Mode nor Test Mode. This will allow your child to work independently, with the aid of the learning resources.



Contact us

E: support@atomlearning.co.uk | T: +442045250743 | www.atomlearning.com